

SAVOY THEATRE

STRAND, W.C.2.

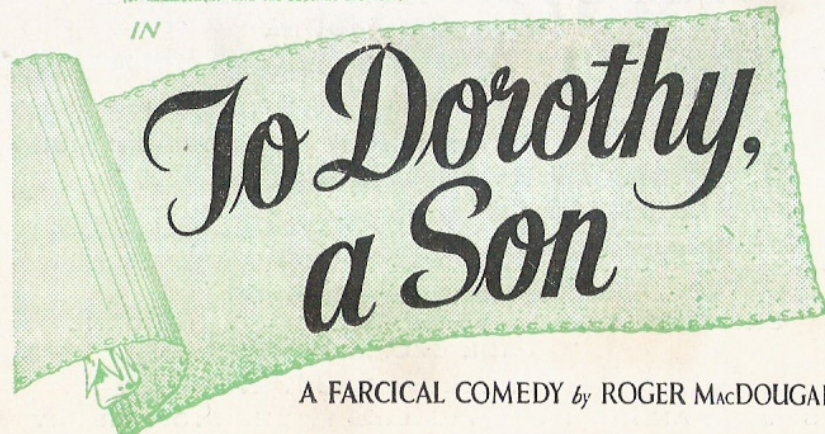
Proprietors THE SAVOY THEATRE, LTD.
Licensed by the Lord Chamberlain to HUGH WONTNER, M.V.O.
General Manager ALFRED NIGHTINGALE

By arrangement with STANLEY FRENCH and ANDREW MELVILLE
JACK DE LEON
presents

RICHARD YOLANDE
ATTENBOROUGH DONLAN

(BY ARRANGEMENT WITH THE BOULTING BROTHERS)

IN



A FARCICAL COMEDY *by* ROGER MACDOUGALL

ALASTAIR HUNTER SHEILA SIM PHILIP HOLLES

DIRECTED BY PETER ASHMORE

Setting Designed by ELIZABETH AGOMBAR

Evenings 7.30 p.m.

Saturday 5.30 and 8.15

Wednesday 2.45

NEBROKEN
S
HIS SEAL
RE THAT
LEASE

H. M. TENNENT LTD.

APOLLO THEATRE

RONALD SHINER BERNARD LEE WILLIAM HARTNELL
"SEAGULLS OVER SORRENTO"
By HUGH HASTINGS

CRITERION THEATRE

ROBERT FLEMYNG ATHENE SEYLER ROLAND CULVER
"WHO IS SYLVIA?"
A COMEDY BY TERENCE RATTIGAN

LYRIC THEATRE

ROBERT MORLEY JOAN TETZEL DAVID TOMLINSON
"THE LITTLE HUT"
A LIGHT COMEDY BY ANDRE ROUSSIN Adapted by NANCY MITFORD

TENNENT PRODUCTIONS LTD.

(IN ASSOCIATION WITH THE ARTS COUNCIL OF GREAT BRITAIN)

DUCHESS THEATRE

JANE BAXTER HERBERT LOMAS
"THE HOLLY AND THE IVY"
By WYNARD BROWNE

DUKE OF YORK'S THEATRE

MAI ZETTERLING PETER FINCH STEPHEN MURRAY
"POINT OF DEPARTURE"
By JEAN ANOUILH Translated by KITTY BLACK

GLOBE THEATRE

MARGARET RUTHERFORD
CECIL TROUNCER AUDREY FILDES DAVID HORNE
PAUL SCOFIELD
"RING ROUND THE MOON"
By JEAN ANOUILH Translated by CHRISTOPHER FRY

HAYMARKET THEATRE

RONALD SQUIRE BASIL RADFORD ALAN WEBB
DENYS BLAKELOCK MARIE LOHR
"A PENNY FOR A SONG"
By JOHN WHITING

LYRIC THEATRE, Hammersmith

The Northern Ireland Festival Company

"THE PASSING DAY" By GEORGE SHIELS
"DANGER, MEN AT WORK" "THE SHAM PRINCE"
By JOHN STEWART By JACK LOUDAN
FOR A LIMITED SEASON

FOR TIMES OF PERFORMANCES SEE DAILY PRESS

PICCADILLY THEATRE

"HIS EXCELLENCY

IS EXTREMELY MOVING AND
MAGNIFICENTLY ACTED" DAILY MIRROR
AND

"ERIC PORTMAN'S

PERFORMANCE MUST NOT BE MISSED"
DAILY EXPRESS

"AN EXCELLENT SHOW" OBSERVER

Evenings at 7.30 Matinees: Wednesday & Saturday at 2.30
Box Office Telephone: GERrard 4506

DRY FLY SHERRY
is in the bar



ASK FOR

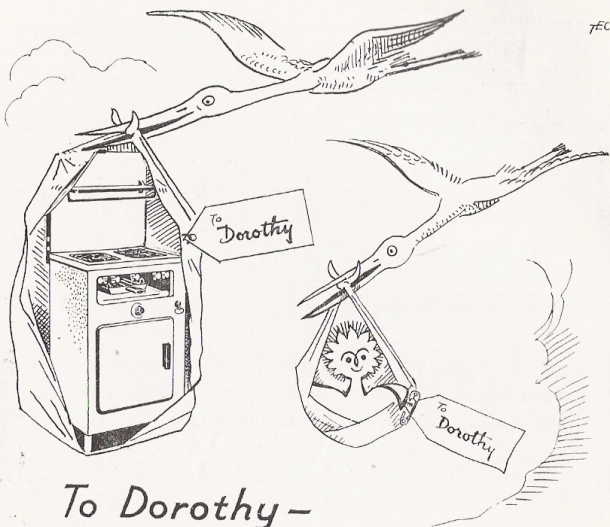
Gordon's

AT THE BARS

AFTERNOON TEA

A special service of Tea
(freshly made for each order)
is served at Matinees in the
Bars and in the Auditorium

To facilitate service, visitors are kindly
requested to order in advance



To Dorothy -
A NEW GAS COOKER !

MR. THERM cannot compose music but he can compose you ; Mr. Therm cannot give you a million dollars, but he can give you invaluable help.

Mr. Therm's never off stage but ever a central figure.

The new cookers use less gas.

THRIFTY WITH GAS, TWICE THRIFTY WITH COAL

NORTH THAMES GAS

By arrangement with
 STANLEY FRENCH and ANDREW MELVILLE

JACK DE LEON

presents

To Dorothy, a Son

A Farcical Comedy by ROGER MACDOUGALL

CAST

in order of speaking :

Toni Rigi	RICHARD ATTENBOROUGH
Dorothy Rigi	SHEILA SIM
Taxi Driver	PHILIP HOLLES
Myrtle	YOLANDE DONLAN
Second Taxi Driver	PETER LAIT
Landlord	ALEC McNEIL
Dr. Cameron	ALASTAIR HUNTER
Nurse	GWENDA WILSON

The Play Directed by PETER ASHMORE

Setting designed by ELIZABETH AGOMBAR

Mr. Attenborough and Miss Sim appear by arrangement with the
 Boulting Brothers

MARSHALL & SNELGROVE
open an
**ECONOMY
SUIT SALON**
ON THE 2ND FLOOR.



Inaugural Offer
TAILOR SUIT in
SCOTCH BIRDSEYE TWEED
in Blue, Red and
Tan Mixtures
SIZES 12 14 16 18
£7-14-3

Special attention to Post Orders

MARSHALL &
SNELGROVE
LONDON W. 1
The First Name
in Fashion

The action of the play takes place in the Rigis' Cottage, near Dorking, Surrey

ACT I

Scene 1 A Spring morning
Scene 2 Four weeks later
Scene 3 The following morning

ACT II

Scene 1 The following morning
Scene 2 About five hours later

Music under the direction of **LESLIE BRIDGEWATER**

"My Heart is Making Music" : Music and Lyrics by Roger MacDougall
Published by Peter Maurice Music Co., Ltd.

Scenery built by Harry Robinson in the "Q" Theatre Workshops and painted by Alick Johnstone. Miss Donlan's Dresses by Rahvis, Ltd., 19, Upper Grosvenor Street, W.1. Miss Sim's Negligee designed by Honoria Plesch. Nylon Stockings by Kayser-Bondor. Telephone Effect and Cue Bar Sound Equipment by Bishop Sound & Electrical Co., Ltd. Lighting Equipment by Strand Electric & Engineering Co., Ltd. Furniture by The Old Times Furnishing Co. The famous Decola and Portable Gramophone kindly loaned by The Decca Record Company, Ltd. The G.E.C. Automatically controlled Cooker has been provided by The General Electric Company, Kingsway, London, W.C.2. Flowers by Floral Decor. Properties by Charles Sharpe. Luggage by A. Garstin & Co., Ltd., 62, Brook Street, W.1. Book Covers lent by Geo. Harrap & Co., Ltd. Lighter by Ronson. Orange and Lemon Squash by Kia Ora. Cigarettes by Abdulla

ACHILLE SERRE FOR QUALITY CLEANING & DYEING
PLUS RETEX (Unique to Achille Serre)

Business Manager	} JACK DE LEON LTD.	.. McARTHUR GORDON
Stage Director HENDERSON STORIE
Stage Manager PETER WILLIS
Assistant Stage Manager ALEC MCNEIL
General Secretary		MARGARET SHEPHERD, Tel. No. : TEMple Bar 9048 GEORGE FEARON (Gerard 4969)
Press Representative		

Manager (for Stanley French) **Kenneth Brodie**

BOX OFFICE (A. L. Skinner) **TEMple Bar 8888**

The Management reserves the right to refuse admission, also to make any alteration in the cast which may be rendered necessary by illness or other unavoidable causes

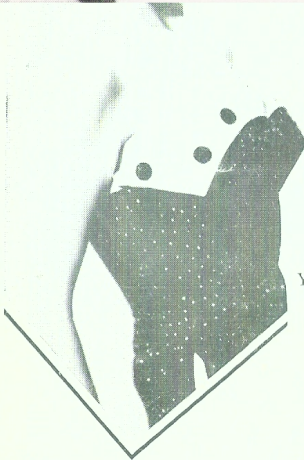
In accordance with the requirements of the Lord Chamberlain.—1.—The public may leave at the end of the performance by all exit doors and such doors must at that time be open. 2.—All gangways, passages, and staircases must be kept entirely free from chairs or any other obstructions. 3.—Persons shall not in any circumstances be permitted to stand or sit in any of the gangways intersecting the seating, or to sit in any of the other gangways. If standing be permitted in the gangways at the sides and rear of the seating it shall be strictly limited to the number indicated in the notices exhibited in those positions. 4.—The safety curtain must be lowered and raised in the presence of each audience.



“Ovaltine
for Sleep and
Morning Freshness”

says

**YOLANDE
DONLAN**

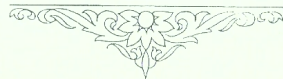


YOLANDE DONLAN writes :

“ The Stage and Film professions are very exacting, and I find ‘Ovaltine’ a splendid restorative after a hard day’s work. A cup at night induces sleep and ensures morning freshness and renewed vitality.”

Prices in
Gt. Britain and N. Ireland
1/6, 2/6 and 4/6
per tin

Whatever your walk in life you will find that ‘Ovaltine’ is the ideal food beverage because it helps to ensure energy and fitness all day and peaceful sleep all night.



P.793A



‘Freesia’—a perfume by **YARDLEY**

BARCLAYS LAGER SOLD EXCLUSIVELY IN ALL BARS

TOLLY ALE

Brewed from
Malt and
Hops only

DELIGHTFULLY
REFRESHING

On Sale at all
Theatre Bars



LIVEN YOUR
SPIRITS
WITH
Apollinaris

OBTAINABLE
IN ALL BARS

STOWER'S FRUIT SQUASHES

ON SALE AT ALL BARS

Huntley & Palmer's CAKE

Served in this Theatre

Ask for
MARTELL
cognac BRANDY
on sale at the bars
THREE STAR - COGNAC BLEU

In our Patrons' Interest
**JENNER'S
GOLDEN ALE**
IS OFFERED IN ALL BARS

BOOTH'S
*Dry
Gin*
On sale at the bars

PUBLISHED BY PAYNE-JENNINGS & KILLICK LTD., GLOUCESTER HOUSE, 19, CHARING CROSS RD., W.C.
PRINTED BY JOHN WADDINGTON (STOKE NEWINGTON) LTD., 108, ALBION ROAD, N.16

Summer Holidays IN MADEIRA

The popularity of the
LUXURY FLYING BOATS
enable us to offer

**26% REDUCTION
ON SUMMER
HOLIDAY FARES**

BETWEEN
MAY 1st and
NOV. 20th

AQUILA AIRWAYS

(operated under an associate agreement with B.O.A.C.)
Details from: 6, Curzon Place, London, W.1. GRO. 3947 or any Travel Agent

SATISFACTORY SECURITY



"That's an interesting costume for a bank manager. It must have a profound effect on the customers."

"Oddly enough, this is not my business attire. I am preparing for tonight's Grand Costume Ball."

"But the conference over the merger tomorrow? An evening of heavy revelry may remove the razor edge from your faculties."

"On the contrary. By refreshing myself exclusively with gin and Rose's Lime Juice I shall awake as clear-eyed and alert as if I'd stayed at home reading some such work as 'The Smaller Overdraft'."

"But this is a message that should be pasted in the cover of every business man's blotter."

"So it should. Now pass me the gin and the bottle of Rose's Lime Juice which you'll find in that deed box. I will demonstrate my confidence in the system."

ROSE'S—for Gin and Lime
ROSE'S LIME JUICE IS STOCKED IN THE BAR OF THIS THEATRE

Air Travel

INSURE Yourself
and your Baggage



Chief Administration:

7 Chancery Lane, London, W.C.2.

WORLD WIDE FACILITIES—WORLD WIDE COVER

9