

## HOUSE AND GARDEN ADMISSION PRICES

| House & Garden        | Price with voluntary Gift Aid donation | Price  |
|-----------------------|--|--------|
| Adults                | £14.00                                 | £12.50 |
| Friends of Charleston | FREE                                   | FREE   |
| National Art Pass     | £7.00                                  | £6.25  |
| Concessions*          | £13.00                                 | £11.50 |
| Family ticket         | £38.00                                 | £34.00 |
| Child (6-18 years)    | £8.50                                  | £7.50  |
| Accessible            | £8.50                                  | £7.50  |

\*Green traveller, student, jobseeker

**Access:** The ground floor of the House is fully accessible, but access to the first floor is via steep stairs with a handrail on the left side. All other amenities are fully accessible with ramped entrances.

♿ ground floor only **P** **WC** ♿ Accessible parking spaces.

No dogs in the House, Garden and Café except assistance dogs.

**Groups:** Charleston welcomes pre-booked groups of up to 50 at reduced rates. Please see our website for details or email [groups@charleston.org.uk](mailto:groups@charleston.org.uk).



photo © Penelope Feviller

## GETTING TO CHARLESTON

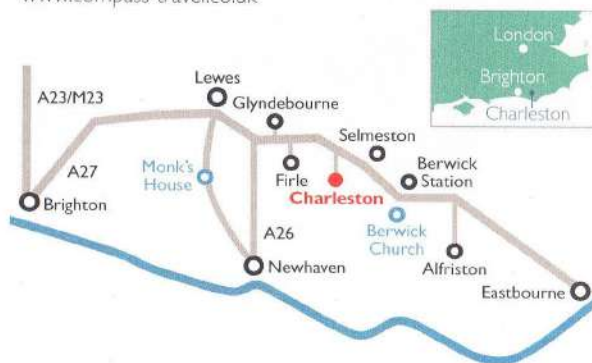
**Charleston, Firle, near Lewes, East Sussex, BN8 6LL**

**Road:** Signposted off the A27 between the villages of Firle and Selmeston, 7 miles east of Lewes.

**Rail:** Nearest station is Berwick (no taxi rank). Trains run from London Victoria to Lewes (taxi rank and bus station).

**Cycling and walking:** Charleston is just a short walk or ride from the South Downs Way. Free walking and cycling maps available to download at [charleston.org.uk/visit](http://charleston.org.uk/visit).

**Bus:** Limited bus service, #125, from Lewes. [www.compass-travel.co.uk](http://www.compass-travel.co.uk)



Charleston would like to give special thanks to its Associate Partners, who generously support us throughout the year:



[twitter.com/charlestontrust](https://twitter.com/charlestontrust)

[facebook.com/charlestontrust](https://facebook.com/charlestontrust)

[instagram.com/charlestontrust](https://instagram.com/charlestontrust)

Telephone: 01323 811 626

The Charleston Trust (Bloomsbury in Sussex) is a non-profit making company limited by guarantee. Registered charity number 1107313, Registered in England & Wales company number 5212725. Registered office: Charleston, Firle, Lewes, East Sussex, BN8 6LL.

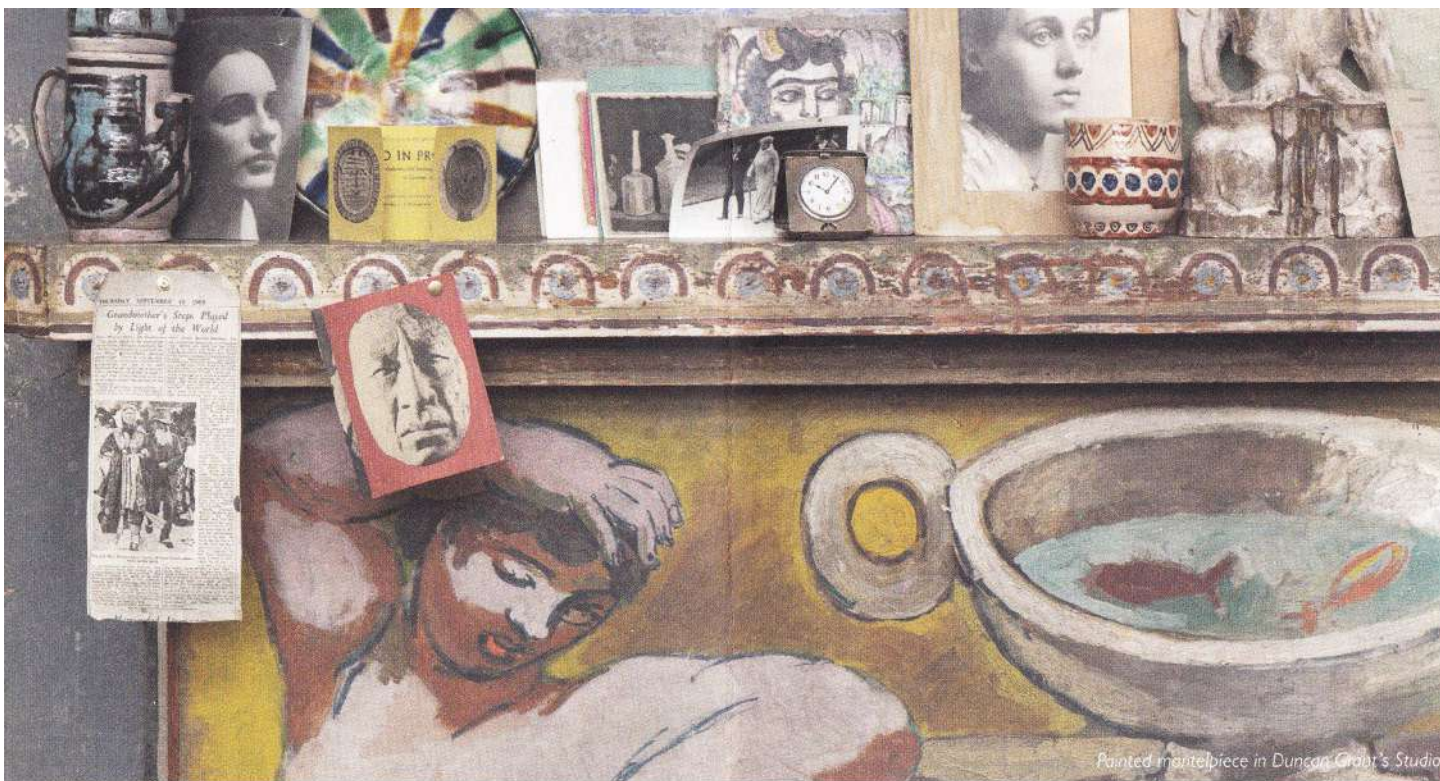


# CHARLESTON

THE BLOOMSBURY HOME OF ART & IDEAS



HOUSE • GARDEN • SHOP • EVENTS  
[CHARLESTON.ORG.UK](http://CHARLESTON.ORG.UK)



Painted mantelpiece in Duncan Grant's Studio

photo © Penelope Fewster

## OPENING TIMES

**1 March – 29 October**

Shop, Café & Garden open one hour before House.

### Wednesday – Saturday

Guided Tours & Garden Entry

**March – June** 12pm – 5pm (last entry 4pm)

**July – August** 11:30am – 5:30pm (last entry 4:30)

**September – October** 12pm – 5pm (last entry 4pm)

### Sundays & Bank Holidays

House & Garden Entry

**March – October** 12pm – 5pm (last entry 4pm)

## KEY EVENTS 2017

**19 – 29 May** Charleston Festival (literature)

**15 June** A Comedy of Errors (theatre)

**28 & 29 July** Festival of the Garden (event)

**30 July** A Gay Outing at Charleston (event)

**27 September – 1 October** Small Wonder Festival (literature)

**2 & 3 December** Charleston Covered

Visit [charleston.org.uk](http://charleston.org.uk) for more information.

## VISIT CHARLESTON

Situated in the heart of the South Downs, Charleston was the home of Bloomsbury artists Vanessa Bell and Duncan Grant. Pioneers of early 20th century British art, Bell and Grant created a hub of artistic and intellectual activity at Charleston with visitors including Virginia and Leonard Woolf, John Maynard Keynes, E.M. Forster and many others.

### HOUSE

Take a one-hour tour with an expert guide (Wednesday – Saturday) or explore at your own pace (Sunday & Bank Holiday Mondays). Discover the narrative behind Charleston's rich history and enjoy the hand-painted walls, doors, furniture and objects that distinguish Charleston as a work of art.

### GARDEN

Our beautiful walled Garden continues to offer the same inspiration to our visitors as it did for the artists that lived here.

### CAFÉ

The Café serves hot and cold drinks, light lunches and delicious cakes. We use locally sourced seasonal ingredients and produce from the Charleston garden.

### SHOP

The Charleston Shop offers an exciting range of Bloomsbury inspired books, cards, handcrafted ceramics, silk scarves, fabric designs by Duncan Grant and much more. Visit our online shop at [shop.charleston.org.uk](http://shop.charleston.org.uk). Please see our website for winter opening hours.

Book your tickets in advance at  
[CHARLESTON.ORG.UK](http://CHARLESTON.ORG.UK)

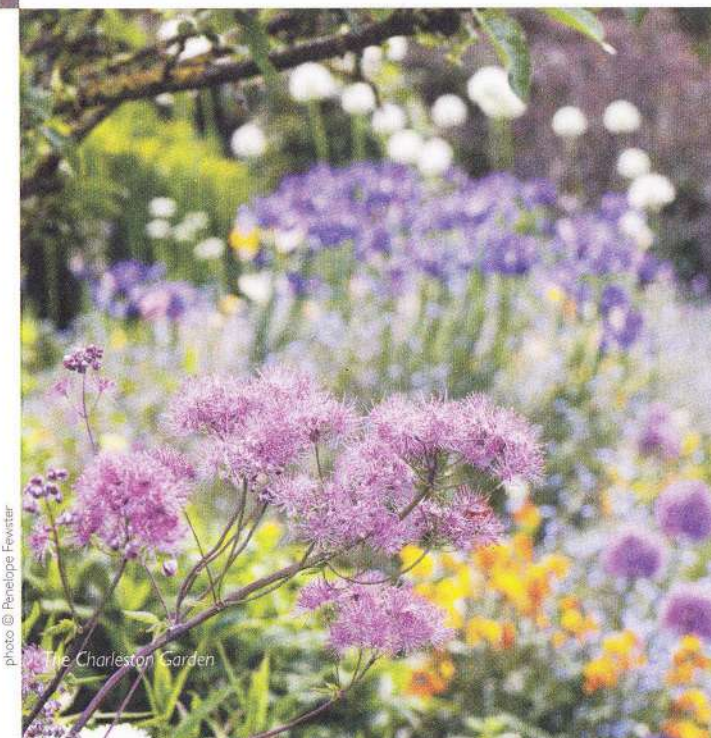


photo © Penelope Fewster

The Charleston Garden