

1953/1954 SEASON
THE OLD VIC COMPANY

THE TRAGEDY OF
HAMLET, PRINCE OF DENMARK

William Shakespeare

6^{D.}

1953-1954 SEASON
FIRST FIVE WEEKS OF REPERTORY

October 5th to October 10th

Monday	..	5th October at 7.15	..	All's Well That Ends Well
Tuesday	..	6th October at 7.15	..	Hamlet
Wednesday	..	7th October at 7.15	..	Hamlet
*Thursday	..	8th October at 2.30	..	All's Well That Ends Well
Thursday	..	8th October at 7.15	..	All's Well That Ends Well
Friday	..	9th October at 7.15	..	Hamlet
*Saturday	..	10th October at 2.30	..	Hamlet
Saturday	..	10th October at 7.15	..	Hamlet

October 12th to October 17th

Monday	..	12th October at 7.15	..	Hamlet
Tuesday	..	13th October at 7.15	..	All's Well That Ends Well
Wednesday	..	14th October at 7.15	..	All's Well That Ends Well
*Thursday	..	15th October at 2.30	..	Hamlet
Thursday	..	15th October at 7.15	..	Hamlet
Friday	..	16th October at 7.15	..	All's Well That Ends Well
*Saturday	..	17th October at 2.30	..	Hamlet
Saturday	..	17th October at 7.15	..	Hamlet

October 19th to October 24th

Monday	..	19th October at 7.15	..	Hamlet
Tuesday	..	20th October at 7.15	..	Hamlet
Wednesday	..	21st October at 7.15	..	All's Well That Ends Well
*Thursday	..	22nd October at 2.30	..	Hamlet
Thursday	..	22nd October at 7.15	..	Hamlet
Friday	..	23rd October at 7.15	..	Hamlet
*Saturday	..	24th October at 2.30	..	All's Well That Ends Well
Saturday	..	24th October at 7.15	..	All's Well That Ends Well

October 26th to October 31st

Monday	..	26th October at 7.15	..	All's Well That Ends Well
†Tuesday	..	27th October at 7.15	..	King John
Wednesday	..	28th October at 7.15	..	King John
*Thursday	..	29th October at 2.30	..	King John
Thursday	..	29th October at 7.15	..	King John
Friday	..	30th October at 7.15	..	Hamlet
*Saturday	..	31st October at 2.30	..	Hamlet
Saturday	..	31st October at 7.15	..	Hamlet

November 2nd to November 7th

Monday	..	2nd November at 7.15	..	King John
Tuesday	..	3rd November at 7.15	..	All's Well That Ends Well
Wednesday	..	4th November at 7.15	..	Hamlet
*Thursday	..	5th November at 2.30	..	King John
Thursday	..	5th November at 7.15	..	King John
Friday	..	6th November at 7.15	..	All's Well That Ends Well
*Saturday	..	7th November at 2.30	..	Hamlet
Saturday	..	7th November at 7.15	..	Hamlet

*Matinee.

†First Performance.

To receive regular information of Old Vic productions, join THE OLD VIC CLUB. The annual subscription is 2/6d. for an individual or on behalf of an organisation. Just send your name and address, together with 2/6d. for the first year to:—

The Secretary, THE OLD VIC CLUB,
Old Vic Theatre, Waterloo Road, S.E.1.

S-10-53

THE OLD VIC THEATRE

Waterloo Road, S.E.1.

WATERloo 7616

Chairman of the Royal Victoria Hall Foundation :
THE VISCOUNT ESHER, M.B.E.

Clerk to the Governors and Licensee .. GEORGE CHAMBERLAIN

The Old Vic Trust Ltd.

presents

THE OLD VIC COMPANY

in

THE PLAYS OF SHAKESPEARE

Director :

MICHAEL BENTHALL

Administrative Director :

ALFRED FRANCIS

THE DIRECTORS OF THE OLD VIC TRUST LIMITED

Chairman : SIR BRONSON ALBERY

LADY VIOLET BONHAM CARTER JOHN MAUDE, ESQ., Q.C.
D.B.E.

SIR WILFRED EADY, G.C.M.G., JOHN W. RUSSELL, ESQ.

K.C.B., K.B.E. S. T. SHOVELTON, ESQ., C.B.E.

HAMISH HAMILTON, ESQ. MRS. PATRICIA STRAUSS

ALAN PRYCE JONES, ESQ. The Rt. Hon. LORD WILMOT,
P.C., J.P.

THE OLD VIC WORKS BY ARRANGEMENT WITH THE JOINT COUNCIL OF THE NATIONAL THEATRE
AND THE OLD VIC, AND IN FULL ASSOCIATION WITH THE ARTS COUNCIL OF GREAT BRITAIN

THE TRAGEDY OF HAMLET, PRINCE OF DENMARK

By WILLIAM SHAKESPEARE

Characters in order of speaking :

Bernardo	} Officers	JEREMY GEIDT
Francisco		JOHN LAMIN
Marcellus		RONALD HINES
Horatio, friend to Hamlet	WILLIAM SQUIRE
Claudius, King of Denmark	LAURENCE HARDY
Polonius, Lord Chamberlain	MICHAEL HORDERN
Laertes, son to Polonius	ROBERT HARDY
Hamlet, son to the late, and nephew to the present King			

Gertrude, Queen of Denmark and Mother to Hamlet	RICHARD BURTON
Ophelia, daughter to Polonius	FAY COMPTON
Ghost of the late King Hamlet	CLAIRE BLOOM
Rosencratz	BERNARD HORSFALL
Guildenstern	COURTIERS {
1st Player (King)
4th Player (Prologue)
2nd Player (Queen)
3rd Player (Lucianus)
Fortinbras
Captain to Fortinbras
1st Gravedigger
2nd Gravedigger
A Priest
Osric, a Courtier

Ladies, Courtiers, Players, Soldiers, Sailors :

BARBARA CLEGG	NINA MARRIOTT
MARY STEELE	NANCY STEWART
ROBIN BARBARY	ROBERT GILLESPIE
JOHN GREENWOOD	MICHAEL RAMSEY
DAVID ROSE	BRUCE SHARMAN
ARTHUR SKINNER	JOE STEWART
NEVILLE TEED	CLIFFORD WILLIAMS

Produced by MICHAEL BENTHALL
Costumes and decor by KENNETH ROWELL
Music composed by JOHN GARDNER
Fights arranged by Bernard Hepton and John Greenwood

Scene : Elsinore, Denmark

There will be two intervals of ten minutes

Orchestra under the direction of CHRISTOPHER WHELEN

Façade and Proscenium designed for the Season's repertory by
JAMES BAILEY

Produced at the Old Vic Theatre on Monday, September 14th, 1953

Production Manager	J. A. TITCOMBE
Publicity Manager	PATRICK IDE
Stage Director	TOM BROWN
Stage Manager	ELIZABETH BUTTERFIELD
Assistant Stage Manager	ANN SPIERS
Chief Engineer	JOHN VEASEY
Master Carpenter	KENNETH BONFIELD
Wardrobe Mistress	ANTOINETTE MARA

Scenery made in the Old Vic Workshops under the direction of W. H. Parker, and painted by John Collins and Ann Rodger. Costumes made in the Old Vic Wardrobe under the direction of Dinah Greet. Men's costumes by Susannah Jackson. Women's costumes by Judy Peyton-Ward. Hats by Eric Gates. Costume accessories by Jean Davies. Painting by Jill Crockford. Wigs by Wig Creations and Nathanwigs. Properties made by Helen Thomas, Brian H. Jackson and Stanley Morris. Fibrous Plaster decoration by Thomas and Frediani Ltd. Technical Assistant to James Bailey : Edward Marshall. Photographs by Angus McBean.

House Manager	MARGOT CAMERON
Box Office (WATERloo 7616)	HENRY OSBORN

First aid facilities in this theatre are provided by St. John Ambulance Brigade members who give their services voluntarily.

SMOKING IS NOT PERMITTED IN THE AUDITORIUM

The Management reserves the right to refuse admission, and to make any alteration in the cast which may be rendered necessary by illness or other unavoidable cause.

In accordance with the requirements of the Lord Chamberlain—

1.—The public may leave at the end of the performance by all exit doors and such doors must at that time be open. 2.—All gangways, passages and staircases must be kept entirely free from chairs or any other obstructions. 3.—Persons shall not in any circumstances be permitted to stand or sit in any of the gangways intersecting the seating, or to stand in any of the other gangways. If standing is permitted in the gangways at the sides and rear of the seating, it shall be strictly limited to the number indicated by the notices exhibited in those positions. 4.—The safety curtain must be lowered and raised in the presence of each audience.

The Box Office is now open from 10 a.m. to 8 p.m., and patrons are reminded that seats can be booked during the first interval.

TO MEET YOUR FRIENDS

For the convenience of patrons wishing to meet their friends at the Theatre, the bars are open forty-five minutes before the advertised time of the evening performance and coffee, sandwiches, snacks are available.

SOMEWHERE TO EAT

This brief and necessarily incomplete list of nearby places to eat is offered as a guide to patrons. The Aldwych Brasserie, just across the Bridge, opens for Theatre Dinner at 6 p.m. and serves Supper until 11 p.m. Rule's Restaurant in Maiden Lane takes orders from 6 p.m. until 10.45 p.m. The Strand Palace Hotel Grill serves a la carte meals from 5.30 p.m. and its Winter Garden is open for refreshments to 11 p.m. At the Strand Corner House (near Trafalgar Square) the Brasserie is open from 5.30 p.m. until midnight and the Self-Service is open all night. On this side of the Bridge the British European Airways Buffet (just past the Station and on the left) is open twenty-four hours a day, and down the Lower Marsh on the left-hand side is Steve's Restaurant, where simple meals are served after the show. Across the river once again is the Savoy Hotel, to which we can claim relationship, since this theatre was built on a foundation of the great stones taken from the Savoy Palace when it was pulled down in the late eighteenth century.

SOMETHING TO READ

THE NONESUCH SHAKESPEARE, 4 volumes £7.7.0., OLD VIC DRAMA, Audrey Williamson, 15/-; JOHN GIELGUD: A Photographic Biography, 30/-; ALEC GUINNESS: a new Biography by Kenneth Tynan, 12/6 (ready in November); HENRY IRVING, by Laurence Irving, 50/-; HISTORY OF BRITISH DRAMA, by Professor Allardyce Nicoll, in 3 volumes, 35/- each volume; THE OPEN STAGE, by Richard Southern, 12/6; THE FUGITIVE ART, by T. C. Worsley, 18/-; THE THEATRE NOW, by Harold Hobson, 15/-; AN EXPERIENCE OF CRITICS, by Christopher Fry, 7/6; THEATRE WORLD ANNUAL No. 4 (ready in November), 18/-; THE LIVING ROOM, a Play by Graham Greene, 7/6.

ALL THESE BOOKS AND MANY OTHERS ON THE THEATRE CAN BE OBTAINED FROM HATCHARD'S, 187 PICCADILLY, W.1.

SOMETHING TO HEAR

Hugh Hunt's production of "Romeo and Juliet" with Athene Seyler, Lewis Casson, Claire Bloom, Alan Badel and Peter Finch has been recorded by H.M.V. on three 12" discs 33 $\frac{1}{3}$ r.p.m. (LP) Red Label Records ALP 1053-5. Retail price £5 9s. 4 $\frac{1}{2}$ d.

Robert Helpmann's production of T. S. Eliot's "Murder in the Cathedral" with Robert Donat as Becket has been recorded by Columbia on two 12" discs 33 $\frac{1}{3}$ rd r.p.m. (LP) Nos. 33CX1056/7. The retail price is £3 12s. 11d.



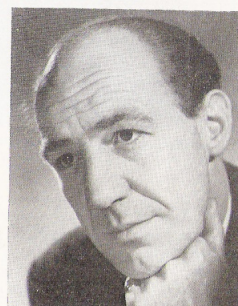
FAY COMPTON



CLAIRE BLOOM



RICHARD BURTON



MICHAEL HORDERN

NEXT PRODUCTION

"King John," produced by George Devine with designs by Motley, will be the next production to be added to the repertory this Season.

The date of the opening performance will be announced in due course (see the front page of this programme for particulars of the Old Vic Club and mailing list).

King John will be played by Michael Hordern, with Fay Compton as Constance and Richard Burton as Faulconbridge. This music for the production has been composed by John Gardner.

"King John" is the first of the "Histories" which will be presented in chronological order during the next five seasons at this theatre as part of the Folio Plan which envisages the production during that period of all the thirty six plays in the First Folio.

PLEASE
SEE THAT
THIS SEAL
IS
UNBROKEN



The Droeshout Engraving of Shakespeare, on the title page of the First Folio, 1623.
(Kindly loaned from the Mander and Mitchenson Theatre Collection).

By 1923, under the management of Lilian Baylis, the Old Vic had over a period of nine years completed the entire Folio, and was the first theatre in the world to have done so.

The Directors of the Old Vic Trust, supported by the Arts Council of Great Britain, announce that once again they intend to attempt to present all the thirty-six plays in the First Shakespearean Folio at the Old Vic during the course of the next five years.

THE VIC-WELLS ASSOCIATION

The Vic-Wells Association was founded by Lilian Baylis to promote the work of the Old Vic and Sadler's Wells. Next to the Gallery Bar in this theatre the Association has an extensive theatrical library; representatives are on duty in this theatre in the bars and in the library from 6.30 to 7.15 p.m. and during the first interval. Membership is 10/- per annum.

Hon. Sec. : c/o SADLER'S WELLS THEATRE, E.C.1.