



THE WORLD OF  
**SUSIE  
WONG**

At the  
**PRINCE  
OF  
WALES**  
COVENTRY STREET



PROGRAMME - ONE SHILLING



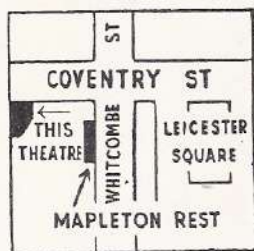
# MAPLETON RESTAURANT

39 COVENTRY STREET, W.1

*It is only round the corner from  
this theatre and is open from  
NOON till 1.30 a.m.*

**THEATRE PARTIES  
SPECIALLY CATERED FOR**

IT HAS A CHARMING ROOM  
WITH SMALL DANCE FLOOR  
FOR REUNIONS & WEDDINGS



*Fully Lic'd*

TRA 7587

*British Biscuits  
at their Best*

Macfarlane, Lang & Co., Ltd.,  
London & Glasgow.



Meet  
**Mr Brandyman**  
-at the bars

Make friends with  
**MARTELL**



**HEY THERE!**

Would you like to  
own a set of  
magnificent pictures  
taken by

**HARRISON  
MARKS**

London's Leading  
Glamour Photographer  
featuring the

**MOST BEAUTIFUL  
SHOWGIRLS IN  
BRITAIN**

This offer is a must  
for connoisseurs  
of beauty

Send 2/- P.O. to the  
**HARRISON MARKS  
STUDIO**

GLAMOUR SERIES DEPT.,  
4 GERRARD STREET, W.1

and we will send you  
POST FREE our series

**SUEDECRAFT**

**FOR THE FINEST SUEDEWEAR  
IN TOWN**

**VISIT** 51 Beauchamp Place, Brompton  
Road, S.W.3. (2 mins. Harrods)

Hand Cut Suede and Nappa Leather  
—made in our own factory. All Garments  
at much lower-than-average prices.

Ladies' Jackets from 10 gns. Men's 11 gns.

Hours: 9 to 6 p.m., Sats. 1 p.m.

Samples, Catalogue, order form on  
request.

SCAMPI · OYSTERS · SALMON

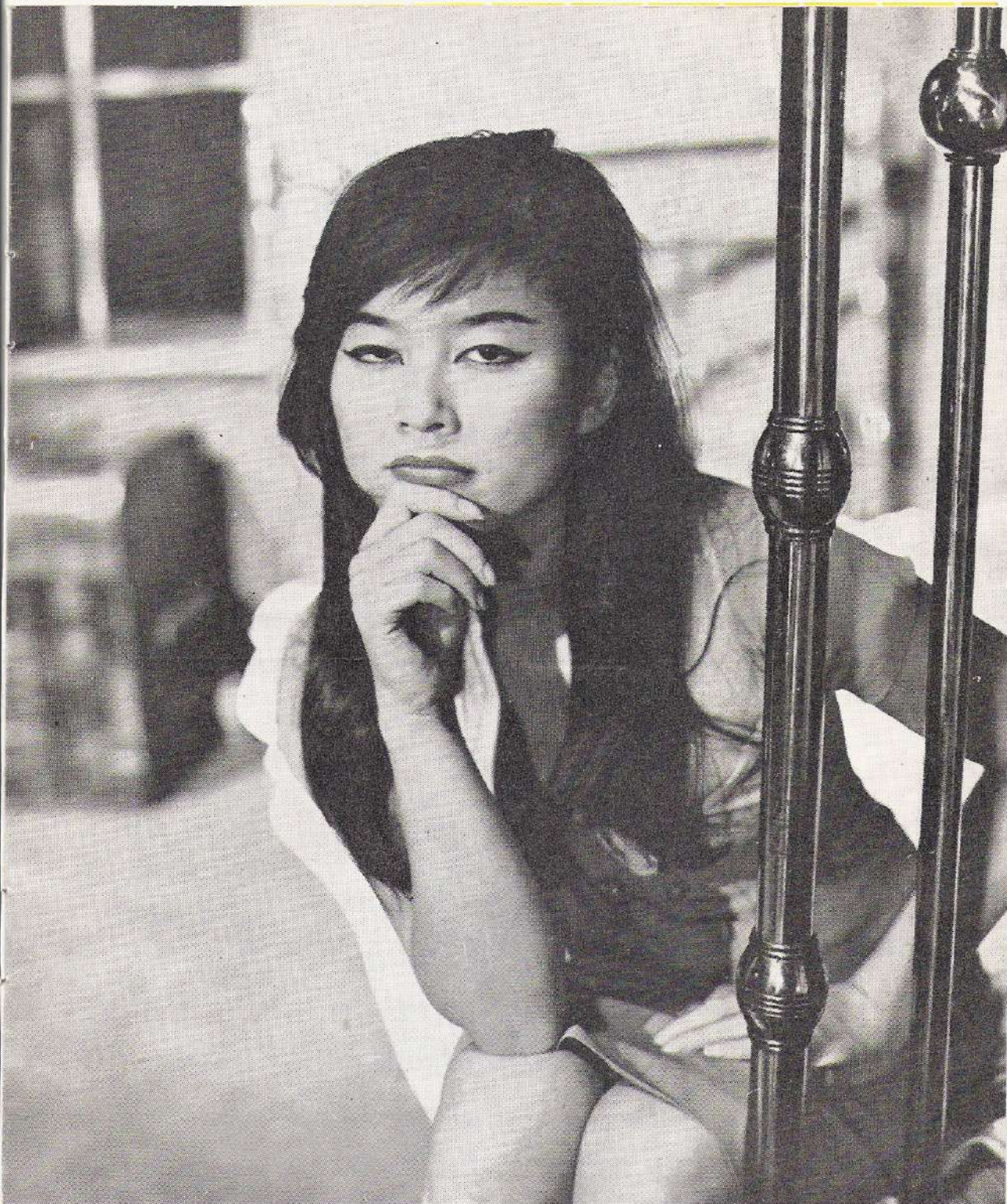
**GARNERS**  
RESTAURANT

**FAMOUS FOR**  
*London's Finest*  
**SEAFOODS**  
AND  
**STEAKS**

27 Wardour St.,  
Leicester Sq., W.1. Gen. 1287

DOVER SOLES · TROUT · HALIBUT

"A beautiful performance by Tsai Chin as Suzie. A year or two back this was not a show for auntie, but aunts being what they are these days, I reckon you can chance it."  
—Empire News and Sunday Chronicle.



TSAI CHIN (Suzie Wong)

"The entertainment merits are considerable; and Tsai Chin as Suzie Wong, the prostitute, carries the audience enthusiastically with her."

—Glasgow Herald.

*Where do we go from here?*

—to the “TALK OF THE TOWN”

where you can dine, dance and watch two fabulous shows—  
THE TEN O’CLOCK FOLLIES and at 11.30 p.m.  
EARTHA KITT. Better value than ever at 47/6. Open until  
1.30 a.m.

**TALK OF THE TOWN**

Only a few yards away from this theatre at Hippodrome Corner, Leicester Square. Tel: REGent 5051

**HONG  
KONG  
EMPORIUM**

Here you can  
obtain Oriental foods,  
delicacies, chinaware,  
fancy goods, silks, um-  
brellas, lanterns and  
decorative articles

53 RUPERT ST  
LONDON, W.1

TELEPHONE: GER 8272  
Nr. Globe Theatre, Shaftesbury Avenue  
Open daily 10 a.m. to 6 p.m.  
Closed Thursdays 1 p.m.



“George —  
George  
please ring up . .  
GERrard 6847  
. . . for a table—

*I want a real  
Chinese Meal  
tonight”*

**HONG  
KONG  
Restaurant**

58-60 Shaftesbury Ave., W.1  
Fully Licensed— 12 noon — 12 midnight  
(Weekdays)  
11 p.m. (Sundays)

“The sets by Jo Mielziner are costly and bright, and a revolving stage keeps up a sense of animation. The play will run for months.”

—Alan Pryce Jones: The Observer.

# PRINCE OF WALES

## THEATRE : COVENTRY STREET, W.1

(Licensed by the Lord Chamberlain to BERNARD DELFONT)

Lessees: PRIME PRESENTATIONS LTD.  
Chairman and Joint Managing Director: BERNARD DELFONT  
Joint Managing Director: MICHAEL DORFMAN  
Resident Manager ... BRENT MAXFIELD      Press Representative ... AL HUNT  
Telephone: GERrard 1995

### Prices of Admission

STALLS ..... 21/- 15/- 12/6  
DRESS CIRCLE ..... 21/- 15/- 10/6 7/6  
BOX OFFICE (Robert F. Linsell) ... open 10—9  
Telephone ..... WHItchal! 8681

EVERY EVENING at 8.50

WEDNESDAYS, THURSDAYS and SATURDAYS at 6.15 and 8.50

First Performance on Tuesday, November 17th, 1959

DONALD ALBERY  
(For Donmar Productions Ltd.) and  
CLINTON WILDER

present

# THE WORLD OF SUSIE WONG

By Paul Osborn

Based on the novel by Richard Mason

with

TSAI  
CHIN

GRAHAM  
LINES

Richard Coleman

Mary Steele

Directed by PETER COE  
(By permission of the Mermaid Theatre Trust)

Settings by Jo Meilziner

Lighting by Joe Davis

The Management reserves the right to refuse admission to the Theatre, and to change vary or omit without previous notice, any item of the programme

PHOTOGRAPHING IN THE THEATRE  
IS FORBIDDEN

"If you are in the mood for a rich and gawdy evening at the theatre, with a lot of laughter, Suzie Wong is your answer. It will probably run for ever."

—Caryl Brahm: John O'London's.

Patrons are invited NOT to put their coats on after the show but to step across the road to the

# QUALITY INN

**OPPOSITE THIS THEATRE**

Open till midnight for good meals  
and some of the best coffee in London . . .

It's also the cheapest  
cup of real coffee in London  
because from 12 noon  
at any Quality Inn restaurant  
your second cup is **FREE**

**8**

**Quality Inn  
Restaurants**

**1**

**HIGH STANDARD OF  
CATERING & SERVICE**

**LEICESTER SQUARE, next ODEON CINEMA**  
From 12 noon until 11.30 p.m. Suns. 12.30 until 10.30 p.m.  
**COVENTRY STREET, opposite PRINCE OF WALES THEATRE**  
11.30 a.m. until Midnight. Sun. 11.30 a.m. until 11 p.m.  
**REGENT STREET, opposite POLYTECHNIC**  
From 8 a.m. until 9 p.m. Sundays 12 noon until 9 p.m.  
**ARGYLL STREET, next PALLADIUM**  
From 9 a.m. until 9 p.m. (Closed on Sundays)  
**100 BAKER STREET, next CLASSIC CINEMA**  
From 10.30 a.m. until 9.30 p.m. Suns. 12.30 p.m. until 9.30 p.m.  
**162 TOTTENHAM COURT ROAD, near MAPLES**  
From 11.30 a.m. until 9 p.m. (Closed on Sundays)  
**65 SOUTH AUDLEY STREET, MAYFAIR**  
From 9 a.m. until 6 p.m. (Closed on Saturdays and Sundays)  
**45 HOLBORN VIADUCT**  
From 9.30 a.m. until 7.30 p.m. (Closed on Sundays)

## **PARTIES,**

Large or Small, are specially catered for by Quality Inns.

Before your next theatre party consult Quality Inns' head office, 22 Leicester Square, W.C.2.

"Spiciest ingredient of the week is 'Suzie Wong,' a spectacular and colourful tale of Hong Kong and the no-so-private lives of its naughty girls. Tsai Chin is a real Oriental character."

—Ross Shepherd: The People.



# THE WORLD OF SUZIE WONG

The action of the play takes place in Hong Kong

## ACT I

A Chinese Ferry  
A Street in Hong Kong—a few hours later  
Robert's Room  
The Bar at the Nam Kok Hotel—a little later  
Robert's Room—a month later

## INTERVAL

## ACT II

A Street in Hong Kong—a month later  
Robert's Room  
The Bar at the Nam Kok Hotel—ten days later  
A Street in Hong Kong—five weeks later  
The Happy Room—an hour later  
A Street in Hong Kong—next day  
Robert's Room

"The Ding-Dong" Song by Lionel Bart

Costume designs re-adapted by Helen Sorenson and costumes executed by BERMANS.

Scenery built by Brunskill & Loveday; painted by Alick Johnstone. Properties by Theatrework (London) Ltd. Flowers by Floral Decor. Lighting Equipment by the Strand Electric & Engineering Co. Ltd. Cigarette lighters by Ronson. Nylons by Bear Brand. Coca-Cola supplied by Coca-Cola Southern Bottlers Ltd. Tareyton Cigarettes by State Express. Juke Box, Pin Table and Fruit Machine by Chicago Automatic Supply Company. Wigs by Nathanwigs. Sound Equipment by Bishop & Electrical Co. Ltd. Spectacles by Clifford Brown Ltd. of Wigmore Street. Sound Effects by Stagesound (London) Ltd. Washing Machine used in the Wardrobe supplied by Hoover Limited. Draperies by John Holliday & Sons Ltd.

For Donmar Productions Ltd.:

General Manager ..... ANNE JENKINS  
Manager and Production Manager ..... Ian B. Albery  
Company and Stage Manager ..... David Turnbull  
Deputy Stage Manager ..... Colin Leslie  
Assistant Stage Managers ..... Janet Derry, Antony Dell, Prue Williams  
Press Representative ..... Duncan Melvin (REG 4562. SLO 3155)  
Assisted by Joan Thring

*In accordance with the requirements of the Lord Chamberlain—*

1.—The public may leave at the end of the performance by all exit doors and such doors must at that time be open. 2.—All gangways, passages and staircases must be kept entirely free from chairs or any other obstructions. 3.—Persons shall not in any circumstances be permitted to stand or sit in any of the gangways intersecting the seating, or to sit in any of the other gangways. If standing be permitted in the gangways at the sides and rear of the seating, it shall be strictly limited to the number indicated in the notices exhibited in those positions. 4.—The safety curtain must be lowered and raised in the presence of the audience

## PRINCE OF WALES

"'The World of Suzie Wong' seems to be the smash hit of the season."  
—Harold Hobson: Sunday Times.

世界  
旺  
蜜  
网  
香  
港  
福  
永







# BEACHCOMBER

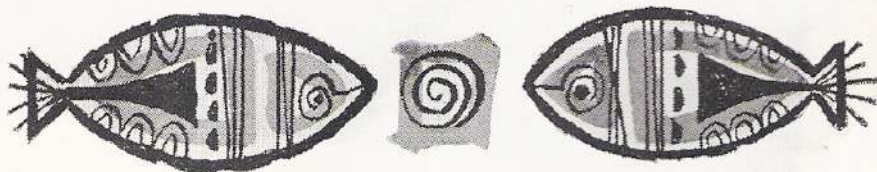
## EUROPE'S FIRST POLYNESIAN RESTAURANT

NOW, the fabulous richness of South Sea Island cuisine and potent Pacific-style drinks, here, in the heart of London!  
Beneath a roof of bamboo and palm fronds, to the sound of surf breaking on a coral strand, soft Hawaiian music accompanies the adventurous appetite! RELAX WITH SUNDOWNER DRINKS IN THE PARADISE ISLAND ATMOSPHERE OF "CASTAWAYS CORNER"

**OPEN FROM 5.30 p.m.**

*Created and Supervised by*  
**Berkeley Square, London, W.1**

**MAY FAIR HOTEL**  
Reservations: MAY 7777



"I nail my colours firmly to the mast. I liked Suzie. The play is ingeniously and colourfully staged. In spite of some frank sex talk this tale of a young man's love for a girl of the Hong Kong pleasure houses is quite beautifully told."

—Yorkshire Post.

THE WORLD OF

SUZIE

WONG



Scenes from the Show:

A Street in Hong Kong

The Bar at the Nam Kok Hotel

"Me likee Suzie Wong vellee much. One should not cry for a full moon when there is genuine Chinese crescent to gaze upon."  
—Alan Dent : News Chronicle.



### The World of Mandarin Therm

Whether your tastes in food are firmly British, or whether the world is your oyster to be opened with a fork; whether you plan a menu with roast beef and Yorkshire pudding, or with some beguiling notion from the world of Suzie Wong—let Mr. Therm take care of the cooking!

This genial mandarin of the culinary world makes cooking a pleasure, and eating a delight.

Even with the most exacting recipes, gas allows the accurate heat control essential to success. There is no guessing with gas. We invite you to see the new cookers at the gas showrooms from about £20, or on easy terms.

### NORTH THAMES GAS

**"There'll be many, many satisfied customers gurgling happily at this portrait of life and love in Hong Kong. They'll give a big hand to charming Tsai Chin; they'll find a ready chuckle at Richard Coleman's neat study of frustration; they'll applaud the staging and the sets by Jo Mielziner. They'll say—Wong? It's all right!"**

—News of the World.



... at  
the  
theatre  
bar  
take  
the  
necessary

# Schwepes

## Comedy Restaurant and Grill

PANTON STREET, HAYMARKET, W.1  
100 yards from this Theatre

THE FAMOUS RESTAURANT  
with an intimate atmosphere



Open for Luncheon from  
Noon. Theatre Dinners served from 5.30 p.m.

**OPEN UNTIL MIDNIGHT**

Menu a la carte at a Reasonable Tariff  
High - Class French Cuisine and Service